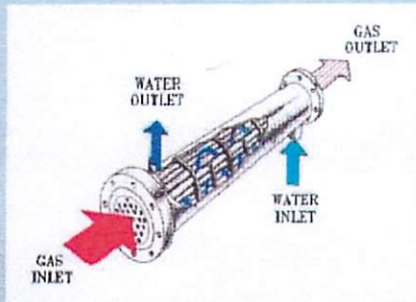


Water Cooled AfterCoolers



The IPAC Advantage

The most compact unit of its kind because of its extended tube surface, the IPAC Inc. Water Cooled Aftercooler is suitable for packaged compressors or any site where space is limited. Built with either patented Helical or plain tubes, 51 series Aftercoolers are designed to deliver a 15-20 degree Fahrenheit approach temperature, depending on water temperature and quantity. The 59 series delivers a 5-10 Fahrenheit approach.

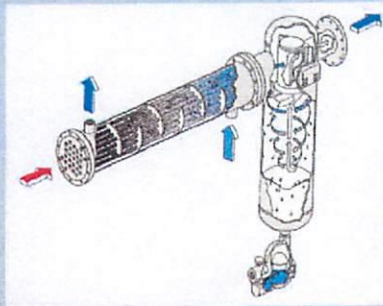


As hot compressed air flows through the extended surface tubes of the IPAC Water Cooled Aftercooler, the cooling water flows on the outside of the tubes in the opposite direction. This counter-flow arrangement makes the tube walls progressively colder for maximum cooling efficiency.

Heat from the compressed air is transferred throughout the tube walls to the water, thereby reducing the air temperature until the dew point is reached. Further cooling causes the vapor to condense on the tube walls forming water droplets, thus reducing the water vapor content of the compressed air.

Product Features

- Available with patented Helical tubes offering extended tube surface for maximum efficiency.
- Alternate materials - stainless steel, admiralty, cupro-nickel, brass, etc.
- Also available in plain tube allowing for lower pressure drop.
- Compact size, vertical or horizontal mounting.
- Standard capacities range from 10 SCFM to 27,000SCFM.
- Built to ASME and TEMA standards.
- Removable bundle configuration facilitates cleaning.
- Custom designs of up to 3,000 PSIG and higher are available depending on application.
- Special designs available - consult factory.



Water Cooled After Cooler Specs

| | | | | | | | | | |
|-------|------------|------------|------------|------------|-----|------------|------------|------|--------|
| W0045 | 76/1.0 | 76/1.7 | 76/2.9 | 76/5.8 | 22 | 2" NPT | 1/2" NPT | WS01 | SAC120 |
| W0055 | 134/1.4 | 134/2.4 | 134/3.9 | 134/7.7 | 30 | 2-1/2" NPT | 1/2" NPT | WS02 | SAC120 |
| W0065 | 220/2.4 | 220/3.4 | 220/5.8 | 220/11.6 | 46 | 3" NPT | 3/4" NPT | WS03 | SAC120 |
| W0070 | 220/2.4 | 220/3.4 | 220/5.8 | 220/11.6 | 60 | 2-1/2" FLG | 3/4" NPT | S04H | SAC120 |
| W0110 | 350/3.8 | 350/6.3 | 350/9.2 | 350/19.3 | 89 | 3" FLG | 3/4" NPT | S04H | SAC120 |
| W0160 | 500/4.8 | 500/7.2 | 500/11.6 | 500/23.2 | 122 | 4" FLG | 1" NPT | S04H | SAC120 |
| W0210 | 600/5.8 | 600/9.6 | 600/14.4 | 600/29 | 128 | 4" FLG | 1-1/4" NPT | S04H | SAC120 |
| W0270 | 765/7.2 | 765/11.5 | 765/17.3 | 765/34.7 | 168 | 5" FLG | 1-1/4" NPT | S4AH | SAC120 |
| W0350 | 1,050/9.6 | 1,050/15.4 | 1,050/23.1 | 1,050/42.4 | 181 | 5" FLG | 1-1/2" NPT | S05H | SAC120 |
| W0420 | 1,200/13.5 | 1,200/23.1 | 1,200/36 | 1,200/72 | 265 | 8" FLG | 2" NPT | S06H | SAC120 |
| W0650 | 2,010/22 | 2,010/36.6 | 2,010/58 | 2,010/111 | 389 | 10" FLG | 2-1/2" NPT | S06H | SAC120 |
| W0900 | 2,785/29 | 2,785/48.1 | 2,785/77 | 2,785/160 | 399 | 10" FLG | 2-1/2" NPT | S08H | SAC100 |
| W1250 | 3,840/36 | 3,840/60.6 | 3,840/87 | 3,840/193 | 600 | 12" FLG | 2-1/2" NPT | S09H | SAC100 |
| W1500 | 4,785/43 | 4,785/72.1 | 4,785/116 | 4,785/241 | 775 | 14" FLG | 2-1/2" NPT | S10H | SAC100 |

Shaded Portion Indicates ASME Section VIII, Division 1, "U" Stamped

| Model Number For 59" units | Maximum Capacity (SCFM) Inlet Air Temperature (°F) | | | | Weight (Lbs.) | Connections | | Recommended IPAC | |
|----------------------------|---|------------------|------------------|------------------|---------------|-------------|--------------|----------------------|----------|
| | 200° Scfm/Gpm | 250° Scfm/Gpm | 300° Scfm/Gpm | 400° Scfm/Gpm | | Air In/Out | Water In/Out | Horizontal Separator | Drain |
| | W0039 | 37/1.0 | 37/1.5 | 37/2.1 | | 37/4.8 | 20 | 1-1/2" NPT | 1/2" NPT |
| W0049 | 69/1.1 | 69/1.7 | 69/2.6 | 69/5.5 | 26 | 2" NPT | 1/2" NPT | WS01 | SAC120 |
| W0059 | 120/1.9 | 120/2.4 | 120/3.6 | 120/7.7 | 34 | 2-1/2" NPT | 1/2" NPT | WS02 | SAC120 |
| W0069 | 210/2.6 | 210/3.9 | 210/5.8 | 210/10.6 | 53 | 3" NPT | 3/4" NPT | WS03 | SAC120 |
| W0090 | 210/2.6 | 210/3.9 | 210/5.8 | 210/10.6 | 69 | 2-1/2" FLG | 3/4" NPT | S04H | SAC120 |
| W0140 | 320/4.0 | 320/6.7 | 320/9.2 | 320/17.0 | 102 | 3" FLG | 3/4" NPT | S04H | SAC120 |
| W0180 | 460/5.0 | 460/7.7 | 460/11.6 | 460/19.0 | 137 | 4" FLG | 1" NPT | S04H | SAC120 |
| W0230 | 550/6.7 | 550/10.0 | 550/14.5 | 550/28.0 | 144 | 4" FLG | 1-1/4" NPT | S04H | SAC120 |
| W0330 | 720/8.2 | 720/12.5 | 720/17.3 | 720/31.0 | 188 | 5" FLG | 1-1/4" NPT | S4AH | SAC120 |
| W0380 | 955/10.6 | 955/15.4 | 955/21.2 | 955/38.6 | 205 | 5" FLG | 1-1/2" NPT | S05H | SAC120 |
| W0490 | 1,145/19.3 | 1,145/25.1 | 1,145/38.6 | 1,145/69.6 | 297 | 8" FLG | 2" NPT | S06H | SAC120 |
| W0710 | 1,915/24.0 | 1,915/38.5 | 1,915/58.0 | 1,915/116 | 440 | 10" FLG | 2-1/2" NPT | S06H | SAC120 |
| W0980 | 2,630/33.7 | 2,630/53.0 | 2,630/77.0 | 2,630/145 | 450 | 10" FLG | 2-1/2" NPT | S08H | SAC100 |
| W1400 | 3,635/41.0 | 3,635/63.5 | 3,635/91.0 | 3,635/169 | 660 | 12" FLG | 2-1/2" NPT | S09H | SAC100 |
| W1700 | 4,315/48.0 | 4,315/72.1 | 4,315/106 | 4,315/193 | 850 | 14" FLG | 2-1/2" NPT | S10H | SAC100 |
| W2000 | 4,880/58.0 | 4,880/81.7 | 4,880/120 | 4,880/212 | 950 | 14" FLG | 4" FLG | S12H | SAC100 |
| W3000 | 7,180/92.0 | 7,180/135 | 7,180/192 | 7,180/387 | 1,250 | 18" FLG | 5" FLG | S13H | SAC100 |
| W4000 | 9,675/116 | 9,675/188 | 9,675/289 | 9,675/531 | 1,600 | 20" FLG | 6" FLG | S14H | SAC100 |
| W5000 | 11,970/139 | 11,970/222 | 11,970/323 | 11,970/579 | 1,950 | 20" FLG | 8" FLG | S15H | SAC100 |

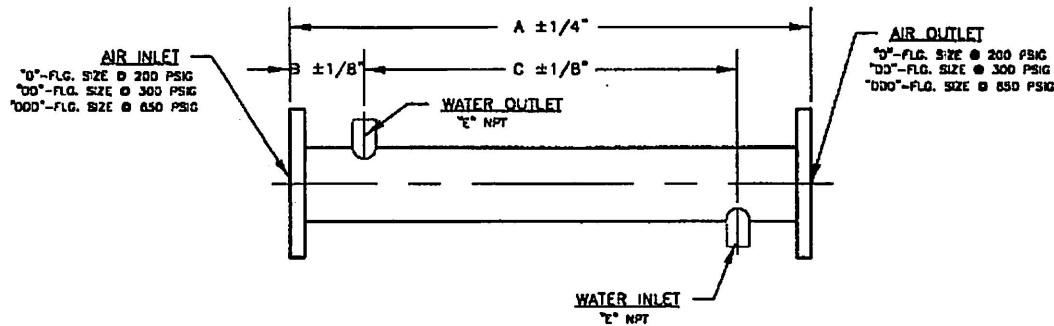
NOTES:

- Compressed air rated at 100 PSIG.
- Ambient conditions rated at 75°F and 50% relative humidity
- Water inlet temperature rated at 80°F
- Average air pressure drop is less than 2 PSI
- Typical inlet temperatures: single stage = 350°F; two stage = 250°F rotary = 200°F.
- Model W0035 - W0065 - MAWP 300 PSIG.
- Model W0039 - W0069 - MAWP 300 PSIG
- All other models - MAWP 200 PSIG.
- All units for 51" Series are 51-1/8" overall length.
- All units for 59" Series are 59" overall length.

SIZING YOUR AFTERCOOLER:

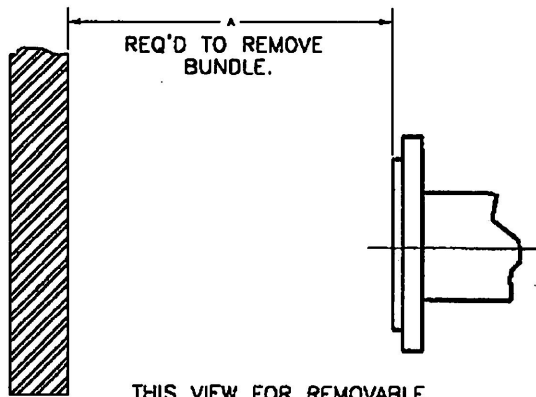
1. Enter selection chart at the appropriate compressed air inlet temperature.
2. Move down the column until you reach the SCFM Capacity of the compressor.
3. Read the left to find the model number that handles your required capacity.
4. Approach temperature 51 Series – 15°F, 59 Series – 10°F.

| REV | REVISION DESCRIPTION | BY | DATE |
|-----|------------------------------------|-----|------|
| B | GENERAL REVISION & ADDED 600# FLGS | JAF | |



NOTES:

1. FLANGE BOLT HOLES STRADDLE C 'S.
2. PAINT IS STANDARD.
3. DESIGN, CONSTRUCTION AND INSPECTION ARE STANDARD.
4. ASME STAMP IS STANDARD.
5. COPPER TUBE BUNDLES ARE STANDARD
304 S.S. TUBE BUNDLES ARE OPTIONAL
REFER TABLE BELOW FOR UNIT RATINGS.
6. DIMENSIONS APPLY TO STANDARD AFTERCOOLER
REFER FACTORY FOR SPECIAL APPLICATIONS.
7. FOR REMOVABLE UNITS, "A" DIMENSION REFERS
TO TUBE BUNDLE. ADD 3/16" FOR OVERALL
DIMENSION.



| | DESIGN PRESSURE | DESIGN TEMP. | TEST PRESSURE |
|------------|-----------------|--------------|---------------|
| TUBE SIDE | 200 PSIG | 400°F | 260 PSIG |
| SHELL SIDE | 200 PSIG | 150°F | 260 PSIG |
| TUBE SIDE | 300 PSIG | 400°F | 390 PSIG |
| SHELL SIDE | 300 PSIG | 150°F | 260 PSIG |
| TUBE SIDE | 600 PSIG | 400°F | 780 PSIG |
| SHELL SIDE | 600 PSIG | 150°F | 260 PSIG |

CONSULT FACTORY FOR SPECIAL RATINGS

THIS VIEW FOR REMOVABLE BUNDLE ONLY.

SERIES 61

| MODEL NO. | A | B (FIXED) | B (REMOVABLE) | C | "D"-200 PSIG | "DD"-300 PSIG | "DDD"-600 PSIG | "E" | APPROX. WGT. (LBS) |
|-----------|---------|-----------|---------------|---------|--------------|---------------|----------------|--------|--------------------|
| W0070 | 61 1/8" | 4 1/8" | 4 1/8" | 42 1/8" | 2 1/2"-160# | 2 1/2"-300# | 2 1/2"-600# | 3/4" | 60 |
| W0110 | 61 1/8" | 4 9/16" | 4 9/16" | 42" | 3"-160# | 3"-300# | 3"-600# | 3/4" | 89 |
| W0160 | 61 1/8" | 4 3/4" | 4 3/4" | 41 5/8" | 4"-160# | 4"-300# | 4"-600# | 1" | 122 |
| W0210 | 61 1/8" | 4 11/16" | 4 11/16" | 41 3/4" | 4"-160# | 4"-300# | 4"-600# | 1 1/4" | 126 |
| W0270 | 61 1/8" | 4 11/16" | 4 11/16" | 41 3/4" | 6"-160# | 6"-300# | 6"-600# | 1 1/4" | 165 |
| W0360 | 61 1/8" | 5" | 5" | 41 1/8" | 6"-160# | 6"-300# | 6"-600# | 1 1/2" | 161 |
| W0420 | 61 1/8" | 6 3/8" | 6 3/8" | 38 5/8" | 8"-160# | 8"-300# | 8"-600# | 2" | 265 |
| W0550 | 61 1/8" | 7 1/16" | 7 1/16" | 37" | 10"-160# | 10"-300# | 10"-600# | 2 1/2" | 389 |
| W0600 | 61 1/8" | 7 1/16" | 7 1/16" | 37" | 10"-160# | 10"-300# | 10"-600# | 2 1/2" | 399 |
| W1260 | 61 1/8" | 7 1/8" | 7 1/8" | 38 7/8" | 12"-160# | 12"-300# | 12"-600# | 2 1/2" | 600 |
| W1600 | 61 1/8" | 8" | 7 11/16" | 36 1/8" | 14"-160# | 14"-300# | 14"-600# | 2 1/2" | 776 |

| ITEM | QUANTITY | PART DESCRIPTION | PART NUMBER | MATERIAL |
|---|----------|--|-------------|----------|
| <p>THIS DRAWING AND THE INFORMATION IT CONTAINS IS THE PROPERTY OF IPAC, 2000. THIS DRAWING MAY NOT BE COPIED, REPRODUCED OR DISCLOSED WITHOUT WRITTEN APPROVAL FROM IPAC 2000, INC.</p> <p>IPAC 2000 INC.</p> <p>DO NOT SCALE DIMENS-TOLERANCE ON DIMENSIONS UNLESS OTHERWISE SPECIFIED IS FRACTIONAL 1/32 DECIMAL 0.003</p> <p>Scale: NTS Drawn by: JAF-4/03 Checked by: [Signature] Date: [Date]</p> | | | | |
| 000 | 1 | SITE PLAN FOR 51" WATERCOOLED AFTERCOOLERS | 1400-0042 | B |
| 001 | 1 | W1500 | | |
| 002 | 1 | | | |
| 003 | 1 | | | |
| 004 | 1 | | | |
| 005 | 1 | | | |
| 006 | 1 | | | |
| 007 | 1 | | | |
| 008 | 1 | | | |
| 009 | 1 | | | |
| 010 | 1 | | | |
| 011 | 1 | | | |
| 012 | 1 | | | |
| 013 | 1 | | | |
| 014 | 1 | | | |
| 015 | 1 | | | |
| 016 | 1 | | | |
| 017 | 1 | | | |
| 018 | 1 | | | |
| 019 | 1 | | | |
| 020 | 1 | | | |
| 021 | 1 | | | |
| 022 | 1 | | | |
| 023 | 1 | | | |
| 024 | 1 | | | |
| 025 | 1 | | | |
| 026 | 1 | | | |
| 027 | 1 | | | |
| 028 | 1 | | | |
| 029 | 1 | | | |
| 030 | 1 | | | |
| 031 | 1 | | | |
| 032 | 1 | | | |
| 033 | 1 | | | |
| 034 | 1 | | | |
| 035 | 1 | | | |
| 036 | 1 | | | |
| 037 | 1 | | | |
| 038 | 1 | | | |
| 039 | 1 | | | |
| 040 | 1 | | | |
| 041 | 1 | | | |
| 042 | 1 | | | |
| 043 | 1 | | | |
| 044 | 1 | | | |
| 045 | 1 | | | |
| 046 | 1 | | | |
| 047 | 1 | | | |
| 048 | 1 | | | |
| 049 | 1 | | | |
| 050 | 1 | | | |
| 051 | 1 | | | |
| 052 | 1 | | | |
| 053 | 1 | | | |
| 054 | 1 | | | |
| 055 | 1 | | | |
| 056 | 1 | | | |
| 057 | 1 | | | |
| 058 | 1 | | | |
| 059 | 1 | | | |
| 060 | 1 | | | |
| 061 | 1 | | | |
| 062 | 1 | | | |
| 063 | 1 | | | |
| 064 | 1 | | | |
| 065 | 1 | | | |
| 066 | 1 | | | |
| 067 | 1 | | | |
| 068 | 1 | | | |
| 069 | 1 | | | |
| 070 | 1 | | | |
| 071 | 1 | | | |
| 072 | 1 | | | |
| 073 | 1 | | | |
| 074 | 1 | | | |
| 075 | 1 | | | |
| 076 | 1 | | | |
| 077 | 1 | | | |
| 078 | 1 | | | |
| 079 | 1 | | | |
| 080 | 1 | | | |
| 081 | 1 | | | |
| 082 | 1 | | | |
| 083 | 1 | | | |
| 084 | 1 | | | |
| 085 | 1 | | | |
| 086 | 1 | | | |
| 087 | 1 | | | |
| 088 | 1 | | | |
| 089 | 1 | | | |
| 090 | 1 | | | |
| 091 | 1 | | | |
| 092 | 1 | | | |
| 093 | 1 | | | |
| 094 | 1 | | | |
| 095 | 1 | | | |
| 096 | 1 | | | |
| 097 | 1 | | | |
| 098 | 1 | | | |
| 099 | 1 | | | |
| 100 | 1 | | | |

DRAWING
B
 SIZE